



QUALITY

OUTCOMES
IMPROVEMENT AND
ROI THROUGH EHR
INTEGRATED HEALTH
CALCULATORS

galenhealthcare.com

© 2016. All rights reserved.

OUTCOMES IMPROVEMENT AND ROI THROUGH EHR INTEGRATED HEALTH CALCULATORS

Background

eCalcs are health calculators seamlessly integrated with Allscripts TouchWorks™. The concept of eCalcs materialized when a trusted client requested that Galen Healthcare Solutions build a tool that would allow their physicians to perform calculations for Framingham Risk for Heart Attack within the EHR. When our clients saw the usefulness of that calculator, they realized the power of a platform that could host multiple health calculators. Four years and over 80 calculators later, eCalcs not only provides a range of integrated risk score calculators, but it also contains questionnaires as well as comprehensive workflow modules. In 2013, Galen introduced our anticoagulation (AntiCoag) module, designed to help clinicians begin anticoagulant therapy for patients by estimating the necessary dosage.

Summary

Designed as a separate menu document in the EHR menu framework, eCalcs supports quicker and more accurate calculator-driven care decisions by pulling relevant data from a patient's chart, such as demographics, results, problems, medications and vitals into the calculator. This functionality eliminates the need for providers to navigate outside of the EHR, reducing errors due to mistakes in input, and, paramount to all, saving time.

The current patient's health information is preloaded into the calculator, reducing time and errors associated with entering the clinical indicators into the calculator. Scores are automatically documented as Results within the patient chart, and they may be shown in a flow sheet and cited into a Note. Scores are dated for future reference by the physician for the history of the patient and to show trends.

Physicians also use the eCalcs risk calculators to show patients how changes in lifestyle can affect risk. An example is showing a smoker how the risk of stroke will be reduced if they stop smoking.

Risk Calculators



Provides the risk score for over 70 different calculations and screenings.

Questionnaires



A set of questions answered by the patient that is used in the risk score. Questionnaires are valuable for an audit trail used in standards of care for quality reporting. The codes are stored in the system to make it easy to capture data used to answer questions for reporting like: "Did we do a Depression Screening for all of our patients?"

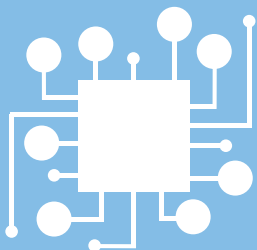
Modules



These workflow modules improve Wound Care and Anticoagulation (Coumadin Management Module) management. These modules make it easy to manage therapy for wound care and Coumadin dosage for the patients. The modules carry patient information forward and prepare calculations when necessary. In the past, practices have paid several thousand dollars for separate third party applications for Wound Care and Coumadin Management solutions that had to be integrated into the Allscripts application. Both of these modules are included with eCalcs at no additional cost.

OUTCOMES IMPROVEMENT AND ROI THROUGH EHR INTEGRATED HEALTH CALCULATORS

Features



Integrated

eCalcs is fully integrated into the Allscripts TouchWorks (formerly Enterprise) EHR, eliminating the need to keep a list of links to outside health calculators and saving precious time with patients.



Patient Specific

The current patient's health information is preloaded into the calculator, reducing the time and errors in entering the clinical indicators for the calculator.



Documented

With the score in hand, we can also seamlessly document this in the patient's EHR chart.

By the Numbers



26 clients
using eCalcs today



12,000 hours saved
on patient calculations through eCalcs



80 eCalcs available
delivering:



Clinical Decision Support



Quality Improvement

Popular eCalcs

- Breast Cancer Risk
- CHADS2 for Risk of Stroke
- ADA Diabetes Risk
- PHQ for Depression
- MELD Score for Liver Disease

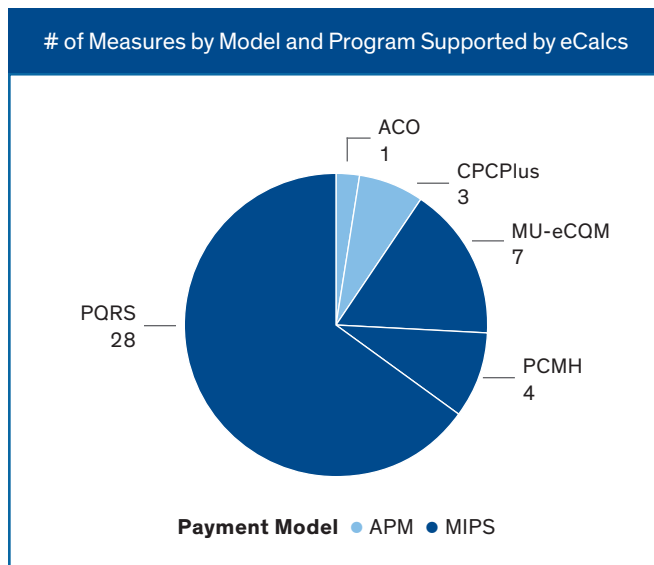


See all eCalcs online
www.galenhealthcare.com/products-services/products/ecalcs/

OUTCOMES IMPROVEMENT AND ROI THROUGH EHR INTEGRATED HEALTH CALCULATORS

Enabling the Transition to Value-Based Care

Given healthcare reform and the rapid shift from traditional Fee-for-Service to Value-Based Care, eCalcs enables organizations to meet several quality programs. There are 15 calculators that meet 43 quality measures under programs such as MACRA - Quality Payment Program (QPP), Merit Incentive Program (MIPS), Alternative Payment Models (APMs), Physician Quality Reporting (PQRS), Accountable Care Organization (ACO), Comprehensive Primary Care Plus, and Patient Centered Medical Home (PMCH). In addition, the calculators and questionnaires utilize SNOMED, LOINC, and ICD-driven codification values to optimize core EMR integration capabilities while satisfying quality initiatives inputs.



Proven Results

ALLSCRIPTS Open App Spotlight: Do patients know what those numbers mean?

Bits of information drive healthcare. A patient's blood pressure is 140/90. Weight is 175 lbs. Blood glucose level is 190 mg/dL. And so on.

An electronic health record (EHR) can gather and organize all this stuff for clinicians. But what does it all mean to patients?

Physicians are always looking for ways to make patient education more meaningful to help improve outcomes. They want to translate EHR information into knowledge that will help bring better health.

To help bring meaning to EHR data, Galen Healthcare Solutions developed eCalcs integrated health calculators using Allscripts Application Programming Interfaces (APIs). It's one of the apps that we recognized in Phase 1 of our Open App Challenge.

Turning Data into Motivating Knowledge

There are a number of health calculators currently online – such as the Framingham Risk Calculator – that give context to patient data. They make it easy to show patients how changes can reduce risk; if you stop smoking, you'll live longer.

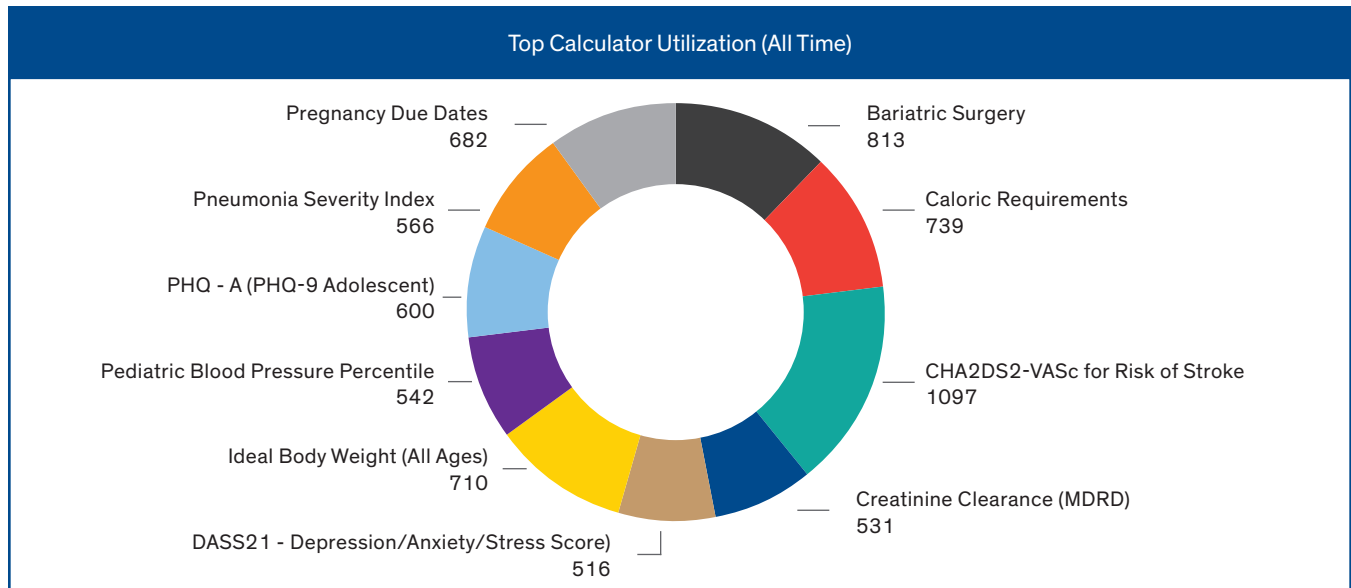
But clinicians have to manually enter patient data into the calculators. Despite the potential insights gained, it simply takes too much time.

Galen's eCalcs auto-populates info from a patient's chart stored in the EHR directly into the calculator. The clinician can then easily use the risk calculators to share information with patients in a relatable way at the point of care.

Most importantly, this app helps connect the dots for patients. They can see their own behavior on screen – not abstract figures.

Let's say someone needs to lose 20 pounds. While he knows he should lose the weight, he goes for years without making any significant changes. Why? Because it's still an abstract number. This tool can help the patient see how losing the weight will improve his blood pressure and eliminate a medication. It might be the motivation he needs to get going.

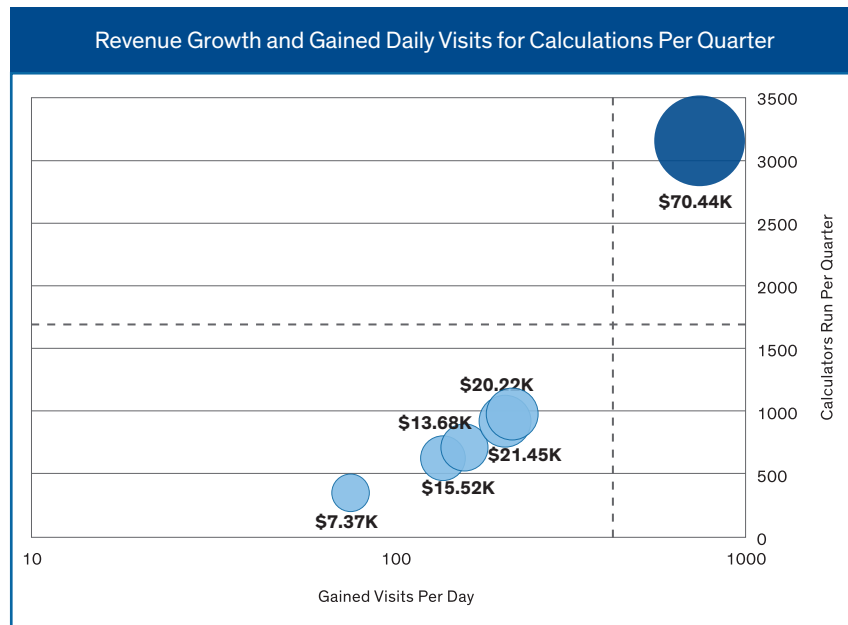
OUTCOMES IMPROVEMENT AND ROI THROUGH EHR INTEGRATED HEALTH CALCULATORS



ROI & Outcomes/ Documentation Improvements

While more and more providers are bogged down in the electronic process, eCalcs simplifies and produces measurable gains. Don't just take our word for it—view how our clients are utilizing eCalcs to drive measurable

clinical decision support, quality improvement, and revenue gains with patients at cardiac risk, patients on anti-coagulation regimens, recovering opioid abusers, and for pregnancy term estimation.



OUTCOMES IMPROVEMENT AND ROI THROUGH EHR INTEGRATED HEALTH CALCULATORS

Client Testimonials

“Can't the computer do that for me? Yes, eCalcs can. When we installed Galen eCalcs, our clinicians deleted their bookmarked calculators and now stay in TouchWorks where patient data is auto-populated and calculation is just a click away.”

Tom Goodwin, Manager of Clinical Systems and Clinical Data, MIT Medical

“The Galen eCalcs are very valuable tools that facilitate the entry of key clinical data elements, as well as their retrieval for display in flow sheets or inclusion in analytic reports. This is particularly useful for clinical quality measures that must be available to providers at the point of care and also must be reported to CMS or other agencies or payers.”

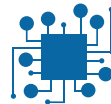
Dr. Mitchell Adler, CMIO, Northwell Health

Conclusion

While the human element of healthcare will never become obsolete, **integrated** clinical calculators and, more broadly, clinical decision support systems are an invaluable asset to care providers. Providers practicing evidence-based medicine need to be able to quickly find and apply validated external evidence to support clinical decision making. As evidenced in this case study, eCalcs provides measurable gains to productivity, efficiency, and more importantly, quality of care and outcomes.



Productivity Gains



Clinical Workflow Integration



Outcomes Improvement



Revenue Generation