

Executive Briefing

MEDITECH Rule-Based Clinical Optimization Methodologies & Strategies

WHAT IS AN EXECUTIVE BRIEFING?

Our MEDITECH Principal Consultant, Kelly Del Gaudio, will share our biggest insights derived from collaboration between Galen Healthcare Solutions and a Focus Group of nine MEDITECH hospitals looking to fill gaps in clinical workflow. We called our effort #NerdyWork, and our goal was to figure out how industry frustrations and pain points can be addressed with embedded rule logic and intuitive workflow redesign.

WHO SHOULD ATTEND?

The presentation is designed for an executive-level audience. We recommend the following attendees to maximize value from the session:

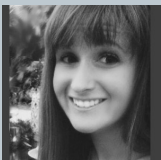
- **CIO:** Identify at-risk patient populations and improve reimbursable revenue.
- **CMIO:** Improve EMR usability & efficiency, and automate clinical decision support.
- **HIM Director:** Reduce IT staff training and compliance time.

HOW WILL WE BENEFIT?

Learning Objectives:

- Gain an appreciation of the abilities and limitations available in the MEDITECH Rules engine.
- Discuss how patient problem rule drivers enforce documentation of clinical quality measures and documentation & management of chronic diseases.
- Describe the use of rules to educate and enforce hospital protocols, calculate to identify risk, and risk stratification of patient populations.

ABOUT OUR EXPERT: KELLY DEL GAUDIO



Kelly is Principal Consultant at Galen Healthcare Solutions, and has been optimizing MEDITECH systems for over 12 years. She worked for MEDITECH on an elite 4-person team (the MEDITECH SWAT Team), whose sole concentration was clinical optimization, ROI analysis, MU certification, and achievement of HIMSS EMRAM Stage 6/7. Kelly currently leads Galen's MEDITECH practice, and championed a focus group, which led to the delivery of ENGINUITY, a clinical decision support solution fully-integrated with MEDITECH 6.x/6.1+/Expanse to improve clinical outcomes, streamline workflow, and reduce cost.